

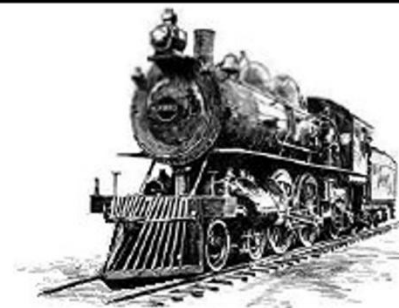


# Maricopa Live Steamers

## STACK TALK

NOVEMBER 2018

The official newsletter of the Adobe Mountain Railroad in Phoenix, Arizona.  
Operated by the Maricopa Live Steamers Railroad Heritage Preservation Society.



### President's Page

Hello, November! I guess, since vacation is over, I need to get back to work. Well, the concrete tie section between Mad Dog and the tunnel switch has been completed, and now, it is open for the Meet and Sunday runs. For this, I owe a great deal of thanks to those who helped me get this done. Time will tell if installing concrete ties on our railroad was worth the labor. One thing is for sure, the termites in that area are going to have to find something else to eat. Driving over those ties has a completely different sound – kind of like going over a bridge, and then back onto solid earth.



### Vice President's Page

Now that the meet is here, we are starting to put up Christmas lights. And after looking at the calendar, it seems that we are to be pulling the public on Friday, 11/23, for Lights night. That's just 3 weeks. This is not a lot of time to get things put up, and I see we will be without some of our key players on the Lights Committee. So, if you feel in the Christmas Spirit, you might want to offer your assistance. Joe Kalisak is the Lights Committee Chairman, so look him up on a Saturday. Remember, all lights are to be put up while they are lit, so that you know they work and the cords are already in place to the power outlets.

The steam engines are trying to develop a schedule where at least one steam engine will be running each Lights night. So far, there are 3 people in the pool: Pardee, Cobb and Lator. Good luck, guys, with the schedule. The sign up board in the club house STILL has a lot of empty spaces, so, if you plan to come out and help, please let the planners know, so that they can concentrate on the short nights, where there may not be enough volunteers to fill all the spaces. We need station attendants and train crews, and any other help you can offer. Also, just because you show up and it doesn't look like you are needed, don't get upset and sit twiddling your thumbs. There is always something you can do. We need station attendants to help get all of the guests to a train next to a certain set of lights before the next train enters the station, and this is such an important job – helping to make the station loading and unloading go as smoothly and efficiently as possible. Last year, I saw Carlisle and Ben doing the shovers job, and it helped to make the loaders job more efficient, and helped to move that huge line of guests along that much faster. I saw on the board that Dakota is going to try to control the parking lot for **ALL** of the nights we are running, and I am sure that the help of another person or three would be very much appreciated. One of the other jobs that gets overlooked is **the relief train crew. As the night goes along, the train crews NEED a restroom break, but can't take one without a relief train crew.** Don't make the train crews depend on their Depends. And if it turns cold on us, a warming break would also be appreciated. Last year was warm and dry, so let's hope we have a repeat of last year's weather.

I would be amiss if I did not touch on safety. The conductors really need to keep an eye focused on feet and hands outside the train. You **MUST** stop the train and **POLITELY** ask the people not to turn around, or drag their feet, or reach out to touch things along the track. This needs to be **ENFORCED**, if we are to be allowed to continue offering nighttime Christmas Lights runs. Passenger safety is priority one! While the engineer is running the train, the conductor is the eyes of the train. We are placing lights in certain places on the curves so that you can see the passengers' feet and whether they are facing forward. From what I have witnessed, many parents do not watch their children, so we need to try to keep them from hurting themselves while they are at MLS. I know that is a lot to ask for, but remember to ask **POLITELY** – "Please do not do that. You could get hurt, and we do not want you to have a bad experience here at MLS." Then, **thank them for coming here.** If this is beyond your ability to talk politely and nicely to the guests of the park, then please keep your mouth shut. I know this is not a nice way to talk to adult members, but sometimes this is the only way to get the point across. You must be nice to our guests. Even if it pains you to talk nicely to people, bite your tongue and try it. Remember, it takes 1 wrong statement to wipe out 25 attaboys. Angry gossip travels much faster than a compliment.

See you at the Park. The Prez and me.

## NOVEMBER CALENDAR

every Saturday	7:00 AM	General Work Day
every Sunday	NOON	<b>Sunday Public Rides – Public train crews needed</b>
Mon. 10/29 – Sun. 11/4		<b>50<sup>th</sup> Anniversary Fall MEET WEEK</b> ( Donna Hohm – Registration )
Sat. 11/10	10:30 AM	Holiday Lights Committee ( Joe Kalisak, Team )
	12:00 pm	Closed Board Meeting
	12:30 pm	General Membership Meeting – <b>2019 Officer Elections</b>
		<b>See last page for the BALLOT – <u>Deadline</u> is 11/9 to Donna</b>
Thu. 11/22	ALL DAY	Thanksgiving ( Family )
Fri. 11/23	6:00 pm	Holiday Lights Public Rides – <b>Day 1 of 13</b>
Sat. 11/24	6:00 pm	Holiday Lights Public Rides – <b>Day 2 of 13</b>
Fri. 11/30	6:00 pm	Holiday Lights Public Rides – <b>Day 3 of 13</b>



*Please see the Election Ballot for*  
**2019 Officers and Board Members-at-Large**  
*at the end of this newsletter*

**Vote Tally Date: November 10, 2018**

**President: Pete Pennarts**  
**Vice President: Joe Schnyder**  
**Secretary: Mick Janzen**  
**Treasurer: Bob Douglas**

**Board Members-at-Large**  
(Choose 3 Names Please)

**Joe Fego**  
**Mike Grant**  
**Dave Griner**



*Please read and follow the instructions*  
*at the bottom of the Ballot*

<b>Pete Pennarts</b> President	<b>Joe Schnyder</b> Vice President
<b>Mick Janzen</b> Secretary	<b>Bob Douglas</b> Treasurer
<b>Joe Fego</b>	<b>Mike Grant</b>
Members at Large	
<b>Cliff Fought</b> Superintendent Construction	<b>Hank Gallo</b> Superintendent Operations
<b>Dave Kulman</b> Maintenance of Way Superintendent	<b>Greg Gorman</b> Tower Signal Superintendent
<b>Terry Liesegang</b> Road Signal Superintendent	<b>Jim Zimmerman</b> Engineer Test Administrator
<b>Bill Pardee</b> Boiler Inspector	<b>Dennis Beatty</b> Public Run Crew Coordinator
<b>Joe Schnyder</b> Safety	<b>Joe Kalisak</b> Holiday Lights Committee Chairman
<b>Perry McCully</b> Facility Administrator	<b>Donna Hohm</b> Membership Committee Chairman
<b>John Draftz</b> Advertising	<b>John Bergt</b> <b>Timothy Freeman</b> Web Masters
<b>Al Ford</b> Construction Superintendent Emeritus	

**Ken Giordano**  
Stack Talk Editor  
Send emails / photos to:  
[MLSnewsroom  
@Gmail.com](mailto:MLSnewsroom@gmail.com)



On September 30, 2018, with deep sadness, one of our members, Timothy Freeman, lost his mother to cancer. Janet Molnar was also the daughter of members Donna and Harold Hohm.

**From the Desk of:** Terry Liesegang Road Signal Superintendent

**Subject:** Pottsville and Bobberg Signals are working again, **WITH CHANGES!**

There has been a signal change on the Bobberg subdivision. The changes have been made between CP Dirtwater Jct and CP Who Nose Wye. **Signals have been installed for bidirectional operation.**

The normal westbound route is CP Dirtwater Jct over the bridge and around Fritze's corner to CP Who Nose Wye. The new secondary route is directly from CP Dirtwater Jct to CP Who Nose Wye. The signal for this route (diverging) at CP Dirtwater Jct will display an "APPROACH" aspect (Rule 360) and at CP Who Nose Wye will display a "FLASHING RED" aspect (Rule 363).

The normal eastbound route is CP Who Nose Wye directly to CP Dirtwater Jct. The new secondary route is CP Who Nose Wye around Fritze's corner and over the bridge to CP Dirtwater Jct. The signal for this route (diverging) at CP Who Nose Wye will display an "APPROACH" aspect (Rule 360) and at CP Dirtwater Jct will display a "FLASHING RED" aspect (Rule 363).

It is up to the engineers to work out any conflicts in movements between these two control points.

**The eastbound train has priority over the westbound train.**

**With the completion of the Pottsville construction, (Thank you to Joe and the Track Team) all signals are functional on the Bobberg and Pottsville subdivisions.**

# MEMBER CONTRIBUTIONS!

## Miss Jr. Engineer



Hey, Hank. I really like these trains!  
Sooo . . . *YOU* had better watch out.  
In twenty years, I'm gonna have *YOUR* job.



Here's the gentleman who started the Jr. Engineer program and the Mega-Tree project, with his head in the clouds, again. So what's your next BIG project, Hank?

Selfie by Hank Gallo

## Mister Jr. Engineer



The puppy's name is Rio and he is 5 months old. We were at Woody Lewis' DSP&P Railroad in Colorado for an invitational meet and Rio wanted to take the train out for a spin. Photo by Phil Nilsson (just along for the ride)

Stories and Photos by Hank Gallo



Left: Cliff Fought and Fred Greenwald were discussing the finer points of wheel rotation and side play. The bearings have been replaced and UP 2001 will be back on the rails very soon.

Right: Bill Cobb built this from scratch, including the passenger cars. It is for his wife Judi, but sometimes Bill will take a ride, when he is not on one of his scratch built steam locomotives. You should expect to see him at this year's Holiday Lights runs.



Left: Mike Grant, Perry McCully and Pete Pennarts replaced the magneto on loco 4402 and are ready to put it back in service. The 16HP V-Twin engine had to be removed to facilitate the repair, so here it is being re-assembled.

**From the Desk of:** Perry McCully Facility Superintendent

**Subject:** Saturday, September 29, 2018

The Facility Superintendent requested a Saturday Work Party on Sept 29th. At 7 am, lots of help showed up, ready to get to work. Tree branches and debris were cleaned up from around the steaming bay and friendship gazebo.

A big thank you for your time and hard work to:

- |                   |                   |
|-------------------|-------------------|
| Helen Lewandowski | Bob Rauperstrauch |
| Dennis Beatty     | Cliff Fought      |
| Pete Pennarts     | Paul Lator        |
| Perry McCully     |                   |



Dan Benton, Timothy Freeman and an unnamed Hobo taking advantage of the (relatively cooler) overcast afternoon to ride the rails.



Is it just my imagination, or has that same Hobo been hanging around Adobe Yards since March?





Planned for Santa's Workshop in Friendship Park: on the left is a pot belly stove that will be painted on the wall, while falling snow will be happening right outside that projected window on the right. I am told that Santa will be there at the North Pole entertaining our guests.

### Two Dynamic Duos putting up Christmas Lights

Bill and Judi Cobb



Jim Zimmerman and Wonder Woman (Mick Janzen)



# STEAM LOCOMOTIVES

## BOILERS

### BACKHEADS

by Dave Griner

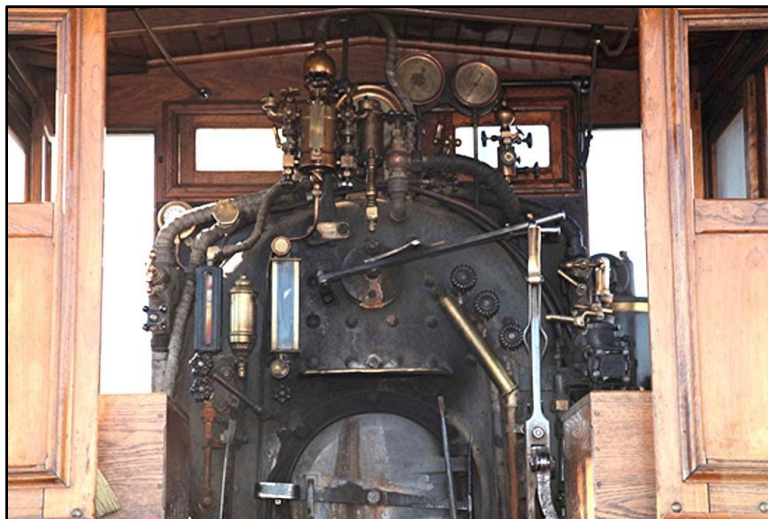


Once again we study more aspects of our boiler, this time the backhead.

Top right: A flanged plate forms the end closure of the boiler, and, in addition, it provides surfaces for the application of many appliances, such as the water glass, valves for injectors, blowers, etc., etc. Here is a fine example of the door sheet along with other parts of the boiler, this one having been sectioned to give a better understanding of how the boiler is constructed.



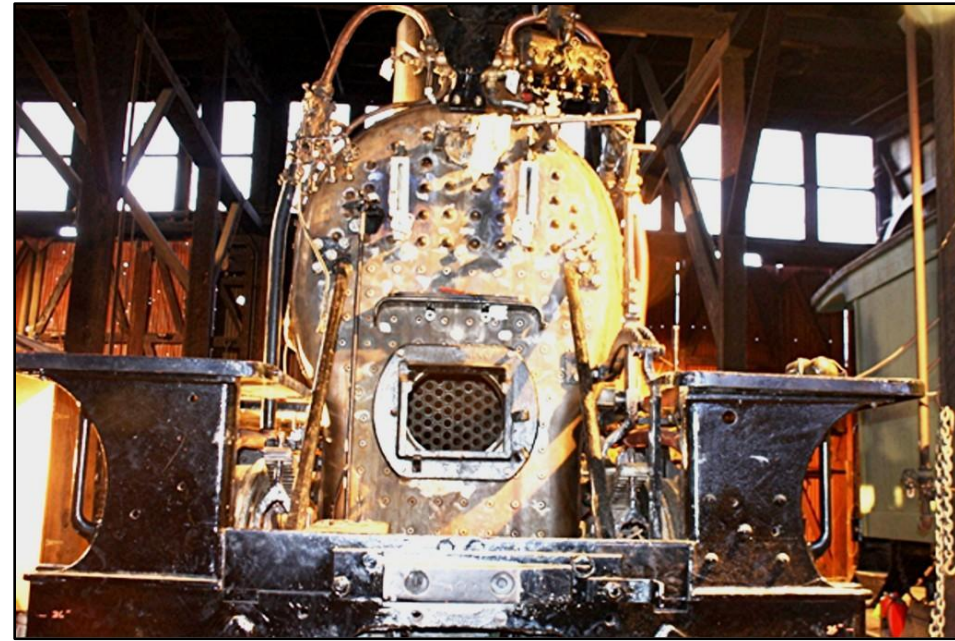
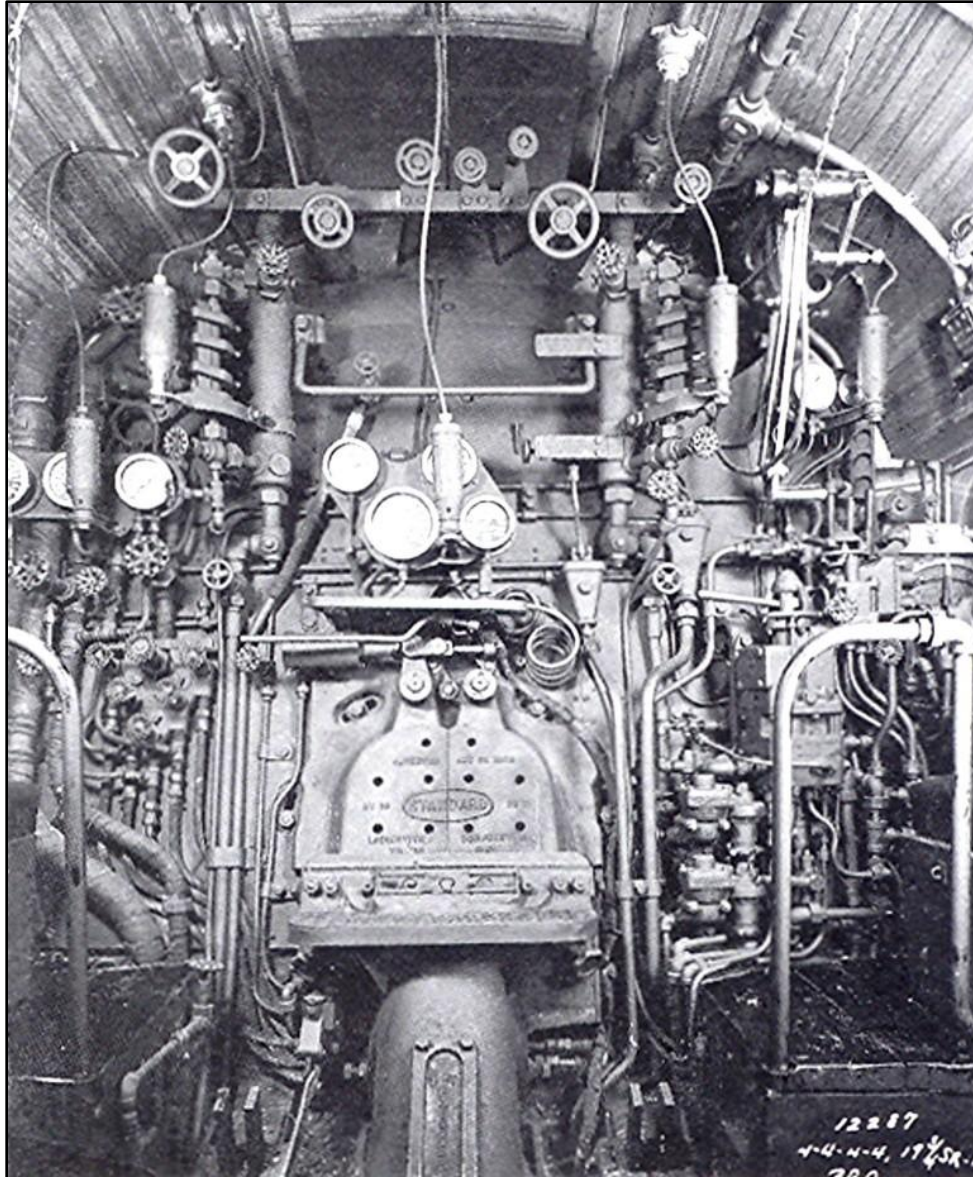
Bottom right: As mentioned, the backhead is the foundation for many of the appliances, this being an early 4-4-0, thus very simplistic, and the plate forming is rather straight forward.





## BOILERS (cont'd)

Right: Pictured is a more modern boiler (circa 1895) and we can see the complication increasing.



Left: Here is the final development of what is applied to the backhead. We can't even see one in there!! This is a PRR T1 cab, and the men operating it had to know what every valve did. Pretty impressive, . . . . eh??

Picture running along at 120 MPH on this puppy . . . . . !!!

This completes the boiler structure.

Next time we'll begin looking at the firebox and associated parts, especially stay bolts!

Have a good Autumn and take care,  
Dave

## TRACKING TRACKSIDE PROGRESS 2018

Continuing progress report on the 2018 Project list, and that special group of members working it.

**We sure appreciate your efforts!**

Story and photo by  
Geronimo Vidales

*Thank you, Geronimo  
for being a valued  
member since 1991.*



I am sending this picture as a follow up to the July, 2018, Stack Talk article about the trees for San Geronimo Station that I was going to donate to the club. Originally ( because of the Price) it was supposed to be only four (4) "Desert Museum" Palo Verdes, but once they were planted, we realized that we would need at least four (4) more trees to complete the landscape scene, so we ended up buying eight (8) trees.

These special "Museum Hybrid Palo Verdes" already have a battery operated drip system, which works only once a week for a couple hours and only for the first six months. After that, it is not necessary to water them, unless we want them to grow faster. With normal watering, they usually grow about 6 ft per year. Here is today's picture ( Sat, Oct 27 ).

For the last couple of weeks, Barbara and I have been working in the afternoons, trimming dry trees and cleaning the landscape so that this area will look nice and clean for the Fall Meet.

## TRACKING TRACKSIDE PROGRESS 2018

Continuing progress report on the 2018 Project list, and that special group of members working it.

**We sure appreciate your efforts!**

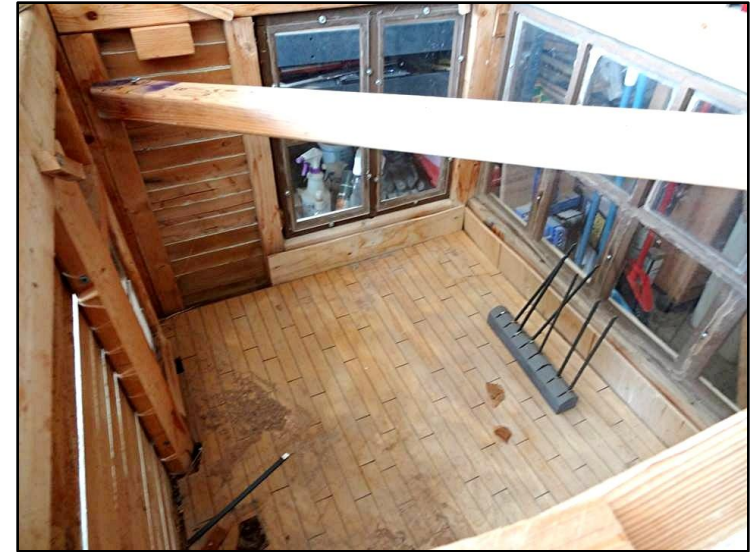
Story and photos by Stan Ferris



Switch Tower Rescue phase one - complete!

Friend Bob Rauperstrauch helped me get the pieces of the building off the truck and into my garage. This 1/8th scale building was located near the intersection of West Werner and Arntchoo. I don't know who the original builder was. It was badly storm damaged and in need of some restoration. I'll post pictures and shoot some video as I make progress.

Not a lot of room left for dancing in my tiny shop now.



Internal view of the tower.

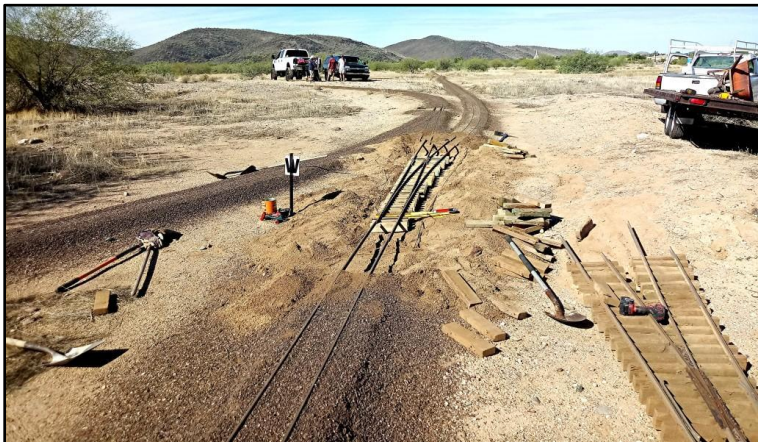


# TRACKING TRACKSIDE PROGRESS 2018

Continuing progress report on the 2018 Project list, and that special group of members working it.

**We sure appreciate your efforts!**

Photos by Pete Pennarts



250-ton working Crane, thanks to the talents of Pete Pennarts and Cliff Fought.

**REPLACED:** One switch at North Junction that was causing havoc during the Sunday Public Runs on 9/30 and 10/7.



Finishing the last of the concrete ties on the Pottsville Branchline – Joe Schnyder, Cliff Fought, Matt Rockwell and Dave Kulman – just in time for the Fall Meet.



## TRACKING TRACKSIDE PROGRESS 2018

Continuing progress report on the 2018 Project list, and that special group of members working it.  
**We sure appreciate your efforts!**

The 1 inch track is DONE and being RUN

Photo by Pete Pennarts



Stories by  
Jerry Grundy

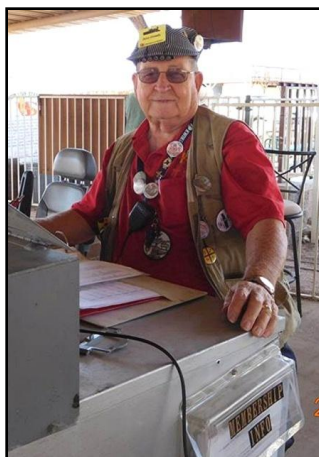
# STATIONMASTER'S LOG

Photos by  
Hank Gallo

## "the Adventures of Jerry and Crews"

**SEPT. 30, 2018** - The Pottsville route was still closed due to construction – new ties and steel rail. We tried using Bobberg, but due to a malfunctioning switch, we had to use Werner East. We ran 9 trips with a total of 118 people. Hank Gallo ran Jr. Engineer school and was very busy. The gift shop was closed, as it was too hot for Sandy Grundy. She got heat stroke the week before. When the day started, the switches could not be thrown using the controls at the Stationmaster's desk. But Tim Freeman and Paul Lator got them working, after Tim changed a circuit board. That helped me a lot, since changing the switches manually in the hot sun all afternoon would have been a problem. So, thank you Tim and Paul. Jim Theobald and Chuck Lorum ran one run for Mick Janzen and Jim Zimmerman, but Mickey and JimZim hung in and finished the day. The last train left the station at 4:15. One other family showed up with one kid in tow, so Hank had him help putting Chessie away, which worked out great. Bill Unglaube worked the gates and safety briefing, which was a very big help.

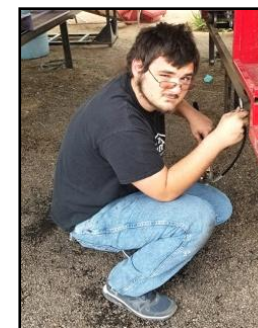
Happy Rails,  
Jerry Grundy  
(Stationmaster)



Bill Unglaube (Gatekeeper)



Paul Lator



Timothy Freeman

Mick Janzen (E) and Jim Zimmerman (C)



Jim Theobald (E) and Chuck Lorum (C)



Hank Gallo  
(Jr. Engineer School)

Stories by  
Jerry Grundy

# STATIONMASTER'S LOG

Photos by  
Hank Gallo

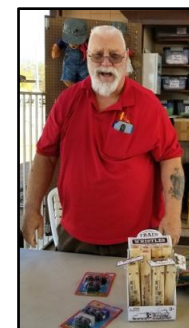
## "the Continuing Adventures of Jerry and Crews"

**OCT. 7, 2018** - It was a very busy day. I was blessed with 2 trains, which made it an easy day. The first train left at 12:08, with Mick Janzen (E) and Jim Zimmerman (C) going to the museum. On the 2nd train, I sent Jim Theobald (E) and Dave Pulver (C) with his assistant conductor Ethan Pulver on Werner. They had no problems on Werner East. One of the switches was replaced by the Track Team on the crossover from Bobberg to the museum, since Pottsville is still closed. Well, there seemed to be another problem, as the train derailed again at a different spot leaving the Museum. So, I wanted to see if another engine would have a problem and it did. I sent out Jim Theobald (E) and Chuck Larom (C), and they also derailed. That problem will be fixed by the meet. If not, it will be closed. So, all the train runs were on Werner East with no problems. For the day, there were 154 riders. Sandra Grundy had the gift shop open with John Broughman assisting. My gate operator started out to be Donna Hohm, which is always a pleasure. On the last half of the day, Bill Unglaube was my gate operator. He is also a great help. Another problem – the switches by Adobe Tower and at the east end of the station were not working. So, I used my scooter to go back and forth to throw them by hand whenever needed. Hank had Jr. Engineer School open and he was very busy. Tim Freeman made up 1 train for me. Bryan Held put away 6005. We had to close at 3:50 due to lightning. Hank put out the train ride signs and I, Jerry Grundy, Stationmaster, picked them up. So with that note, Happy Rails everyone.



Jerry Grundy (Stationmaster)

Mick Janzen (E), Chuck Larom (Passenger) and Jim Zimmerman (C)



Sandra Grundy and John Broughman  
(Gift Shopkeepers)

Donna Hohm and Bill Unglaube  
(Gatekeepers)

Jim Theobald (E), Dave Pulver (C) and Ethan (Jr. Engineer), and Chuck Larom (C)



Stories by  
Jerry Grundy

# STATIONMASTER'S LOG

Photos by  
Hank Gallo

**OCT. 14, 2018** - Hi everyone. It was a beautiful day. The first train left at 12:10, going to the museum with Mick Janzen (E), Jim Zimmerman (C) and 8 passengers. Their run didn't go well. On the return trip, BNSF 2001 derailed after leaving the museum. It is nice to have Ed Houk back in town, as he and Chuck Larom went along with Hank Gallo to get another train consist. On their first run, Ed Houk (E) and Chuck Larom (C) went to Werner with only 9 passengers, but the day did get better. We ended up with 134 riders on 9 runs. Hank had a good day, also, with the Jr. Engineers. It wasn't a very prosperous day, but there will be days like that. Hank took out the signs, and picked them up afterwards. Thanks, Hank. Sandra Grundy ran the gift shop and John Broughman helped out. Sandy appreciates his help very much. It is also nice to have Dave and Belinda Kulman back in town, as they are a great help to the club. Bill Unglaube was a great help with the gate. The switches had to be thrown by hand, so that kept me busy. I could have not done it without my scooter. From Stationmaster Jerry Grundy, Happy Rails.



Jerry Grundy (Stationmaster)  
and Bill Unglaube (Gatekeeper)



Sandra Grundy  
(Gift Shopkeeper)



John Broughman  
(Gift Shopkeeper)

Ed Houk (E) and Chuck Larom (C)



Mick Janzen (E) and Jim Zimmerman (C)





Stories by  
Jerry Grundy

# STATIONMASTER'S LOG

Photos by  
Hank Gallo

**OCT. 21, 2018** - I was sitting at my station desk when this gentleman walked up to the gate and Donna let him in. Wow, what a nice surprise. It was Ken Giordano, our Stack Talk Editor. It is nice to have him here for the Fall Meet. Well, as usual, the first trip went to the museum. Mick Janzen (E) was driving her new engine, a Switcher with a calf. With the train loaded with 9 passengers, off she went with Jim Zimmerman (C). Ed Houk (E) and Chuck Larom (C) brought out 4403 and hooked up to a consist of cars. Once they entered the station, their train was loaded with 8 passengers and off they went to Werner east. The first 3 runs were a little slow, but it picked up after that. There was a birthday party at the new diner pavilion, and they had a good time. Hank Gallo brought out Chessie, and there was a lot of happy Jr. Engineers. My Gatekeepers were Bill Unglaube until 2:30, and then Donna came to relieve him, and she finished the day. There was a train that left at 4:00, and that turned out to be the last train of the day. No one showed up after that. Tim Freeman turned on the power for the switches by the control tower and the east end of the station, which makes it easy for me. I had Perry McCully on standby, if I needed him to manually throw the switches. He did check some for me. Betty and Mary Jo McCully ran the gift shop. Sandra was there to assist them. We had a total of 153 riders for the day. That's it for this week. Happy Rails everyone.



Jim Zimmerman (C) and the beaming Mick Janzen (E) running the Public for the first time with her new engine. She's also anxious to use it for the Christmas Runs – Hey Santa, there's a new Pardee train in Adobe town.

Jerry Grundy (Stationmaster) Donna Hohm and Bill Unglaube (Gatekeepers)  
Sandra Grundy (Gift Shopkeeper)



Ed Houk (E) and Chuck Larom (C)



Perry McCully



Mary Jo and Betty Ann McCully (Gift Shopkeepers)

Stories by  
Jerry Grundy

# STATIONMASTER'S LOG

Photos by  
Hank Gallo

**OCT. 27, 2018 – Swap Meet** - When I first arrived at the station, there weren't any trains in the station. Shortly thereafter, Ed Houk came from the west yard with loco 4403. I asked him if he would hook up to a consist of cars, and he said that he would. Jim Theobald was in the station and I asked him if he would be the engineer and Ed Houk would be the conductor. So, I had a train and crew. The first train left the station at 10:30 with 13 passengers, but it had to use Bobberg and the bypass to get to the museum, since Terry Liesegang was working on the signals. Yes, Bobberg is up and running. I had to use the same route for the second run. Finally, for the last 2 runs, I was able to use the Pottsville Branch. There was a total of 57 riders for the 4 runs. The passenger count was way down from previous years. Steven from AMRS said that also. I'd like to thank Sandra Grundy for having the gift shop open. I'd also like to thank Donna for working the gate for the pre-boarding video. We finished around 1:30.

Jerry Grundy (Stationmaster)

Sandra Grundy (Gift Shopkeeper)



Jim Theobald (E) and ED Houk (C)



Donna Hohm  
(Gatekeeper)

Stories by  
Jerry Grundy

# STATIONMASTER'S LOG

Photos by  
Hank Gallo

**OCT. 28, 2018** - The first train left the station at 12:15 with 10 passengers and crewed by Mick Janzen (E) and Ed Houk (C), since Jim Zimmerman was not feeling well. It went to the Museum via Pottsville Branch, which is up and running now with concrete ties, thanks to Joe Schnyder and his crew. Mickey ran her personal engine, since BNSF 2001 was still not working properly. The second train crew was Jim Theobald (E) and Chuck Larom (C). They ran Werner and one trip to Bobberg. Terry Liesegang is working on the signals and trying to get them up and working. Many thanks to those guys, as it makes the run to the Museum very much shorter. I also would like to thank Pete and his crew for completing Johnson Way. It has a new canopy and is very nice, and it also makes it nicer to have the people get into the briefing area. Pete also filled in the gaps of the tracks leading to the briefing area which was a tripping hazard. We are all proud of your accomplishments, so again, thank you. I always brag as how all the work is done by our very well qualified member volunteers. But then, on another note, all the work that's done around the club is done by the same group of guys. You will always see them working at the club, so thank you all very much. Well, again the gift shop was opened by Sandra Grundy, thank you very much. I had a new member manning the gates for the first part of the day. He is Fred Kraus, a close friend of Paul Lator. Then Donna Hohm finished the day. Tim Freeman had my switches working at the east end of the station and the switches by the control tower. That is a great help, thanks Tim. The day finished with 10 runs and a total of 167 passengers. There were 2 trains running and at the end of the runs, Ed Houk put them in their proper barns. Thank you very much, and it is nice to have you back for the season. After the day's runs, Larry Allen and Ed Houk helped Mickey put her engine away. That's it for this month. **HAPPY RAILS, EVERYONE!** Jerry Grundy (Stationmaster)

Jim Theobald (E) and Chuck Larom (C)



(Gatekeepers)

Fred Kraus and Donna Hohm

(Gift Shopkeeper)

Sandra Grundy

Mick Janzen (E) and Ed Houk (C)



MLS has been invited by the **Portarlington Bayside Miniature Railway of Geelong, Australia** to share newsletters. Here is their advertising brochure. Their August, 2018, issue will be emailed as a separate attachment.

### SPECIAL EVENTS



Looking for something unique to celebrate your next birthday or special function. Call our bookings office to discuss your next birthday or function on 0476 124 598 or visit our website.



Find us on 

Supported by City of Greater Geelong through its Healthy & Connected Communities Grant Program



### HOW TO FIND US



### POINT RICHARDS STATION

Cr Point Richards Rd & Boat Rd Portarlington  
Information & Bookings  
Phone: 0476 124 598  
Email: [secretary@miniaturerailway.com.au](mailto:secretary@miniaturerailway.com.au)  
Post: P.O Box 419 Portarlington 3223

[www.miniaturerailway.com.au](http://www.miniaturerailway.com.au)  
[www.facebook.com/miniaturerailway](https://www.facebook.com/miniaturerailway)

# ALL ABOARD !

## Portarlington Bayside



### Miniature Railway

GEELONG'S ICONIC MINIATURE RAILWAY  
LOCATED ON THE BEAUTIFUL FORESHORE  
OF PORTARLINGTON



It's nice to know that the MLS has a great reputation for serving the public, even as far as the opposite side of the world.

### ALL ABOARD THE PBMRI!

A ride on the 1.2km Portarlington Bayside Miniature Railway is an unforgettable experience.

As the train departs from Point Richards Station you are overcome with the freshness of the ocean breeze as the train whines through picturesque parklands.

Allow yourself to leave behind the modern world and become immersed in the charming atmosphere that our railway has to offer.

Be whirled away into the past and imagine the powerful sounds of a roaring locomotive, with its whistle echoing across the Bay

### PORTARLINGTON BAYSIDE MINIATURE RAILWAY

The magic and charm of the miniature railway has brought enjoyment and fun to a generation of families over many years since the first operated public running day in January 1999.

Portarlington Bayside Miniature Railway, is Geelong's only 7.25 and 5 inch Miniature Railway and Australia's only miniature railway located on a foreshore.

The railway is located on eight hectares of open picturesque native parklands. Directly adjacent to the beautiful foreshore of Portarlington overlooking Port Phillip Bay.

The Facility offers a vintage Railway Station and Signal Box with an undercover platform, which seats up to 70 guests.

The Kiosk offers tea, coffee, cold drinks, ice creams and light refreshments, with a great selection of handcrafted railway souvenirs.

Free undercover barbecues and picnic tables are available for use all year round.

The children's adventure playground will bring hours of fun for your family.

### ADMISSION

#### Ride Prices:

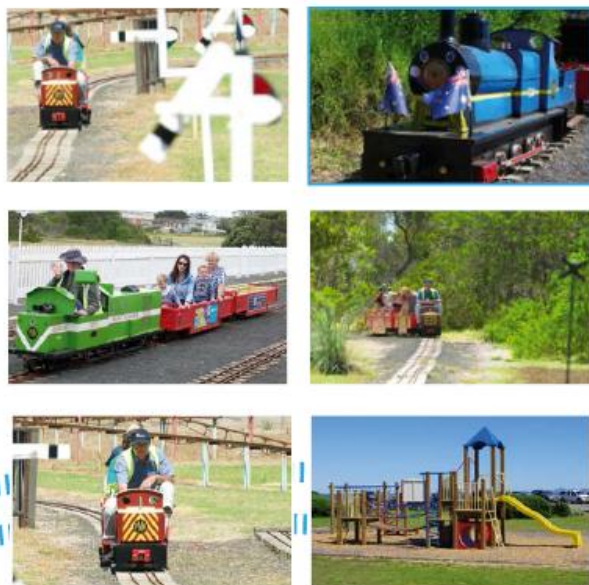
Singles Ride:	.....	\$4.00
Family Day Pass:	.....	\$35.00
Family Season Pass:	.....	\$90.00

#### Running Times:

- Summer: Every Sunday from 11am to 4pm
- Winter: 1st & 3rd Sunday from 11am to 3pm
- School Holidays: Wednesdays during school holidays throughout the year

#### Keep in mind

- Family: 2 adults and up to 3 children
- Service run more frequently during school holidays.
- Running times are subject to the weather



# HAPPENING NOW!

**Please help Santa and his favorite Elf Perry provide the public with the best Holiday Lights experience ever.**

That means moving the public quickly and painlessly through our program, so we need as many Station Attendants and Trains as possible, PLEASE.



## **Badly Needed!** Trains and People for the 2018 Holiday Lights

Last year our members provided rides for over 12,000 passengers during the 12 nights of operation. As our Holiday Lights program grows in attendance each year, we need more Trains, Train Crews and Station Attendants to make this happen. Those of you who have a Steam Engine or Diesel Locomotive, this is the perfect opportunity to show off your equipment to the public, and most of all, to have fun. Steam trains are everyone's favorite, too!

This year's dates are Nov. 23/24, Nov. 30/Dec. 1,  
Dec. 7/8, Dec. 14/15, Dec. 21/22/23 and Dec. 28/29

**- just announced - this year it's a 13 night show.**

**We are asking everyone for at least one evening, just 3 hours for a really good cause.**

Training is provided. Thank you for helping make the Lights program a success.

**Merry Christmas to you!**

Joe Kalisak [jojo1208@cox.net](mailto:jojo1208@cox.net)

Holiday Lights Committee Chairman



One of these trains could be **YOUR'S** for the evening!

# HAPPENING SOON!

## CHRISTMAS PARTY

### POT LUCK DINNER

December 8 ~ 1:00 pm

The Christmas Pot Luck will be Saturday, December 8th, following the December Membership Meeting.

I'd like to encourage participation by all!

We are usually heavy on the desert table, so please consider a vegetable, meat or main dish as a welcome addition. We look forward to a nice dinner, along with good fellowship. See you there!

Donna Hohm – 773-802-0223



New gingerbread people have been spotted around the park already.

## Winterfest, 2019

January 16<sup>th</sup> – 19<sup>th</sup>, 2018

**HURRY!**

**Registration Deadline is Dec. 31<sup>st</sup>**  
(necessary for pre-ordering the caterers)

**Both engineers and passengers  
will be accommodated.**

*please see the next page*

from the Conductor's  
Point of View



## Maricopa Live Steamers Winterfest 2019, 13<sup>th</sup> Annual Operations Meet

You are invited to participate in the 13th Annual Operations Meet to be held January 16th – 19th, 2019, at Maricopa Live Steamers in Phoenix, AZ. This is an open invitation meet, but all attending people must pre-register regardless of their participation. If you are bringing your wife, girlfriend, children, etc, then they must also be pre-registered, even if they do NOT plan on participating in the operation sessions.

Everyone must be pre-registered by January 1st, 2019.

Lunches will be your responsibility. Dinners will be catered on Thursday, Friday and Saturday evenings. Money for catered meals must be sent with your registration. If you need to cancel, please do so before January 1st, 2019, in order to receive a refund of your meal money. You are not required to sign up for the catered meals, but if you don't, you will be responsible for your own dinners on those nights. Please note that you will not be able to sign up for catered meals after the January 1st, 2019, deadline.

We look forward to seeing you in January. Please RSVP as soon as possible with a check or money order. We can only guarantee 90 operating positions. If we receive more than 90 participating registrants, we will rotate the additional participants into the operation sessions.

We use FRS radios with assigned channels from 3-10 with privacy code 10. Exact channel assignments will be listed in the operation timetable. You will also want to bring a flashlight, warm clothing, rain gear (it does rain in Phoenix *occasionally*) to have fun in our cooler winter temperatures.

Please review our operating and safety rules on our website.

[www.maricopalivesteamers.com](http://www.maricopalivesteamers.com)

Track plan information can be found on the MLS website as well as a map to MLS. RV parking and camping is available, but there are no RV hookup facilities. Upon arrival to MLS, please check in at Ford Station to pick up your information packet. You must be unloaded on the 16th, and ready to run card order on the 17th. Pre-registered but late arrivals will be accommodated as much as possible.

### NOTE:

#### **BRIEFING MEETING ON WEDNESDAY, 16<sup>TH</sup>, at 6:30 PM**

Maricopa Live Steamers is in one of Phoenix's natural parks. There are coyotes and other critters living here. We ask that you not bring pets, for the sake of your pet's safety.

Wednesday, January 16	All Day - Check In (Open Running) <b>BRIEFING MEETING 6:30 PM</b>
Thursday, January 17	8:30am - 12:00pm Card Order Running 1:00pm - 4:30pm Card Order Running 5:30pm - 6:30pm <b>Pizza Dinner</b> 6:30pm - 9:00pm Card Order Running
Friday, January 18	8:30am - 12:00pm Card Order Running 1:00pm - 4:30pm Card Order Running 5:30pm - 6:30pm <b>Chinese Dinner</b> 6:30pm - 9:00pm Card Order Running
Saturday, January 19	8:30am - 12:00pm Card Order Running 1:00pm - 3:00pm Card Order Running 3:00pm - 5:00pm Pick Up Cars 5:30pm - 6:30pm <b>Bar-B-Que Dinner</b>
Sunday, January 20 (Note:	All Day - Open Running Public will be present for public run day)



# ***SEE Trains*** **IN THE GARDEN**

*In the Phoenix  
Metro Area*



## **ANNUAL CHRISTMAS** ***Open House Tours!*** **2018**



***Sat & Sun, December 8 & 9***  
***Sat & Sun, December 15 & 16***  
***5:30pm - 8:30pm***

*Celebrating the holidays with eighteen homes and one children's medical center,  
with G-scale garden railroads, on display in Phoenix and the east valley.*

*Your tax deductible donations will be accepted and used to support  
ABTO activity throughout the valley, including the maintenance of  
the Cardon Children's Medical Center and Ryan House Railroads.*

**Look for Maps, photos, & Videos on the website**

**[www.azbigtrains.org](http://www.azbigtrains.org)**





**Maricopa Live Steamers**  
**Winterfest 2019, 13<sup>th</sup> Annual Operations Meet**  
**Registration Form**

Name: \_\_\_\_\_  
(As you want it to appear on name tag)

Additional family members:  
Will they be participating? Yes \_\_\_ No \_\_\_

Additional family members:  
Will they be participating? Yes \_\_\_ No \_\_\_

Address: \_\_\_\_\_

City, State, Zip: \_\_\_\_\_

Phone: \_\_\_\_\_

Email Address: \_\_\_\_\_  
(This will only be used to send you a confirmation)

Will you be bringing any equipment? Yes \_\_\_ No \_\_\_  
If yes, please list the type and car number (if applicable)

Motive Power

(Note: Due to dry conditions, solid fuel steam engines require spark arrestors)

Rolling Stock (to be switched) \_\_\_\_\_

ITEM	# of PEOPLE	PRICE	TOTAL
<b>Pizza Dinner</b> Thursday, 1/17, 5:30 PM	X	\$ 9.00	=
<b>Chinese Dinner</b> (Catered by Panda Express) Thursday, 1/17, 5:30 PM	X	\$ 9.00	=
<b>BBQ Dinner</b> (Catered by Famous Dave's) Thursday, 1/17, 5:30 PM	X	\$ 19.00	=
Your Registration Admin Fee (Non-Refundable)	X	\$ 5.00	=
Additional Family Member's Registration Admin Fee (Non-Refundable)	X	\$ 2.00	=
<b>TOTAL enclosed with RSVP</b>			

Please make a copy of this form for your records and mail one to: **Jim Zimmerman**  
Please make check payable to **Maricopa Live Steamers**. **7301 E. Garfield St.**  
**Scottsdale, AZ 85257**



## 2019 MLS Annual Membership Renewal Form

Please complete this application and mail it to:

Maricopa Live Steamers  
Attn: Membership Committee  
22822 N. 43<sup>rd</sup> Ave  
Glendale, AZ 85310  
[donnaahohm@yahoo.com](mailto:donnaahohm@yahoo.com)

You must pay your dues by December 31<sup>st</sup> to be included in the 2019 Roster

**All MLS members over the age of 18 are charged a Park Usage Fee of \$10.00 which is included in your dues.** Your annual dues support club operation and facility maintenance only. All club improvements and railroad expansion are supported by public and club member contributions, which are tax deductible.

### PAYMENT

New Member Application:  
Initiation Fee for New Resident Member (includes name badge) \_\_\_\_\_ \$50 \_\_\_\_\_

Anyone with personal equipment stored on MLS property must pay Resident Membership dues.

Resident Renewal or new membership:

Single Membership \_\_\_\_\_ \$170 \_\_\_\_\_

Spouse Membership \_\_\_\_\_ \$35 \_\_\_\_\_

Junior Membership (\$10 per child) \_\_\_\_\_ Qty \_\_\_\_\_ X \$10 \_\_\_\_\_

Non-Resident Membership (more than 75 miles from Phoenix)

Single Membership \_\_\_\_\_ \$40 \_\_\_\_\_

Spouse Membership \_\_\_\_\_ \$10 \_\_\_\_\_

Junior Membership (\$10 per child) \_\_\_\_\_ Qty \_\_\_\_\_ X \$10 \_\_\_\_\_

Stand-alone Junior Membership (must have a sponsor)

Sponsor's Name \_\_\_\_\_ \$10 \_\_\_\_\_

Optional Fees

Club Locomotive Use Fee (First Year Only) \_\_\_\_\_ \$150 \_\_\_\_\_

Annual Locomotive or Rolling Stock Use Fee \_\_\_\_\_ \$50 \_\_\_\_\_

New Name Badge \_\_\_\_\_ \$10 \_\_\_\_\_

MLS is in the process of upgrading the track and switches to steel rail and plastic ties.

Please consider a tax deductible donation to the Track Maintenance Fund. \_\_\_\_\_ \$ \_\_\_\_\_

**TOTAL PAYMENT \$ \_\_\_\_\_**

The following information will be used to produce a membership roster. It is not made public and is only distributed to MLS members.

Member Name: \_\_\_\_\_ Email: \_\_\_\_\_

Member's Cell: \_\_\_\_\_ Junior Member Name (s): \_\_\_\_\_

Spouse Name: \_\_\_\_\_ Spouse Email: \_\_\_\_\_

Address, City, State, Zip: \_\_\_\_\_

Home Phone: \_\_\_\_\_ Club Key # \_\_\_\_\_ I own a container: Yes \_\_\_\_\_ No \_\_\_\_\_



# MLS Election Ballot for 2019 Officers and Board Members-at-Large

Vote Tally Date: November 10, 2018

President: **Pete Pennarts**  Write In:

Vice President: **Joe Schnyder**  Write In:

Secretary: **Mick Janzen**  Write In:

Treasurer: **Bob Douglas**  Write In:

## Board Members-at-Large (Choose 3 Names Please)

**Joe Fego**  **Mike Grant**  **Dave Griner**

Write In:  Write In:

**Fill in each circle for the candidate you are voting for.**

Voting will take place at the November General Membership Meeting – 11/10/2018.

Please present your ballot at the meeting or mail to:

**MLS November Meeting, 22822 N 43rd Ave, Glendale, AZ 85310**

Mailed ballots must be received prior to the November General Membership Meeting to be counted.

**All ballots require a signature for membership verification.**

---

Member Name:

*Member Signature:*